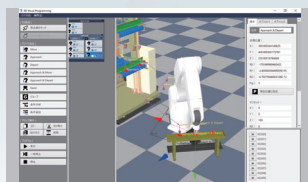


Easier  
and  
Simpler

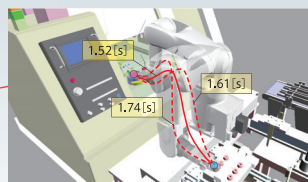


We provides optimal applications for each design, installation, operation, and maintenance scene.

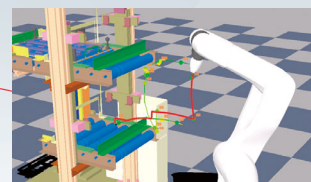
3D Visual Programming



Optimal Motion Planner

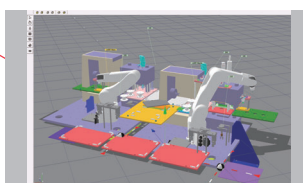


Home Position Guidance

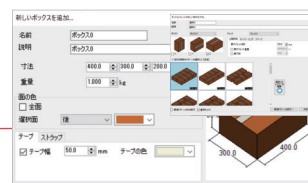


WINCAPSⅢ +

**WINCAPS Plus**

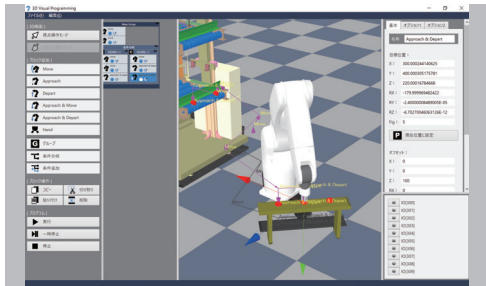


Robot Viewer



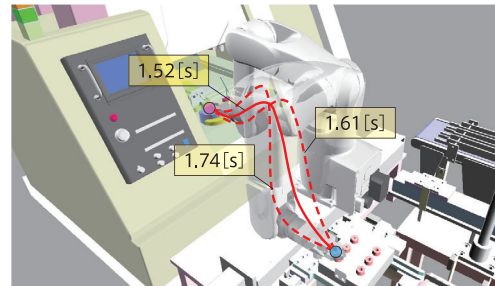
Palletizing Builder

## 3D Visual Programming



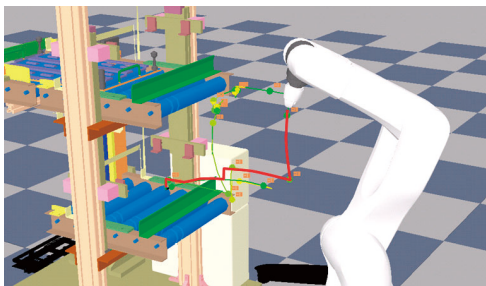
By enabling to place the flow control statements (conditional branches) visually on the trajectory, Users not familiar with the robot programming language can recognize the robot movement and easily write the codes.

## Optimal Motion Planner



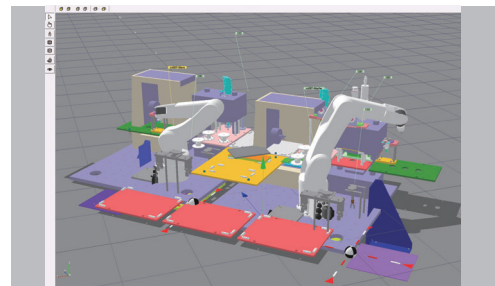
By specifying the start and the end points for the robot movement, the trajectory avoiding obstacles with the shortest cycle time is automatically generated. The trajectory generation that relies on the skilled users' experience is now scientifically performed, so that both skilled users and beginners can extract the same performance from the robots.

## Home Position Guidance



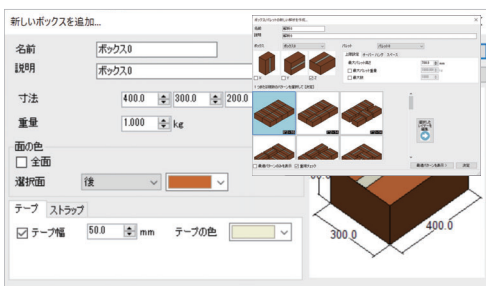
"Home Position Guidance" generates the path to safely go back to Home Position, assuming no obstacles on the paths the robot recorded during the automatic mode.

## Robot Viewer



"Robot Viewer" is the 3D Viewer used in WINCAPS Plus. Enhanced 3D CAD data loading, object operating environment, and object management enables WINCAPS Plus products to provide a comfortable simulation environment.

## Palletizing Builder



"Palletizing Builder" is the software used for palletizing and depalletizing. The target position considering the movable range is automatically displayed by entering the shape and dimensions of the pallet and work. It is also possible to handle the multiple shapes and sizes of works.



Supported languages  
Japanese, English, Germany, Korean, Chinese

**DENSO**  
DENSO WAVE

Please visit our website for more information on products and functions.  
<https://www.denso-wave.com/>



Official DENSO WAVE Channel:  
Provides explanatory videos of functions, case studies, and robot applications.



DENSO Products and Services Americas, Inc.  
3900 Via Oro Avenue, Long Beach, California, 90810, U.S.A.  
Phone : +1-888-476-2689 FAX : +1-310-952-7502

DENSO KOREA CORPORATION  
131, Seonggogae-ro, Uiwang-si, Gyeonggi-do, Korea 437-120  
Phone : +82-31-340-1783 FAX : +82-31-8033-7213

DENSO TAIWAN CORP.  
No.525 Sec.2, Mei Su Road, Jui Ping Li, Yang-Mei Town, Taoyuan Hsien, Taiwan  
Phone : +886 3-482-8001 FAX : +886 3-482-8003

DENSO EUROPE B. V. DENSO Robotics Europe  
Waldeckerstrasse 9 D-64546 Moerfelden-Walldorf, Germany  
Phone : +49-6105-27-35-150 FAX : +49-6105-27-35-180

DENSO (CHINA) INVESTMENT CO., LTD.  
No.35 Yuandian Road, Minhang District, Shanghai, CHINA 201108  
Phone : +86-21-2350-0093 FAX : +86-21-2350-0179

DENSO SALES (THAILAND) CO., LTD.  
888 Moo 1, Bangna-Trad Rd. Km 27.5, T.Bangbor, A.Bangbor, Samutprakarn, 10560, Thailand  
Phone : +66-2-315-9500 FAX : +66-2-315-9556